

GAME COLOR XPRESS & HOBBY PAINT

Available March 2023

THE CONCEPT

The new Game Color formulation represents **a new approach to painting Fantasy and Wargame figures.**

Developed by our experts together with professional modelers, the new range implies a further step in the evolution of miniature painting by offering an intuitive and easy-to-learn painting method to new generations.

The range has been designed according to the **BSL** (Base, Shadow, Light) figure paint system, based on chromatically compatible **groupings of three colors**, which offers the less experienced painters for an easy choice of colors (shades) to paint miniatures with the appropriate highlights and shadows for each base color.

The new r-PET (recycled/recyclable) plastic bottle is completely transparent, improves color visualization and enhances **AV's commitment to sustainability and the environment.** In addition to the new bottle, the new cap includes a security seal.



GAME COLOR

Acrylic colors for all kinds of Fantasy and Wargame figures.

The new Game Color formulation greatly improves the colors application. The paint spreads very smoothly, is **more fluid, opaque and contains a high pigment saturation**, chosen for their **brightness, maximum stability and resistance to light.**

Colors are easy to apply and blend, offer a matt finish and excellent self-leveling properties that prevent brush strokes from showing on the painted surface. Formulated with state-of-the-art resins, paints provide a **high resistance to handling and rubbing.**

How to use: apply with a brush. It can also be used with an airbrush if properly diluted with Airbrush Thinner.

XPRESS COLOR

When we need to paint **multiple figures** in a fast way, Xpress Color is the ideal choice, these matt colors are specifically formulated to paint miniatures in a **fast and easy** way.

The main characteristics are its excellent capillarity that allows the color to flow easily over the miniature surface, settling on all the reliefs and more intensely in the crevices of the figure, creating a **contrast effect with a single layer of paint**.

It is recommended to apply Xpress Color on a white or grey primed or painted surface. The color will create light areas on the reliefs, saturated mid-tones and intense shadows in the crevices of the figure.

Like all our products, they are very versatile and **can be applied over any color in the range** to create soft shading and contouring effects, to create glazes or filters and to blend transitions between color tones.

Xpress Color can be mixed together, or can be diluted with **Xpress Medium** to modify or create new shades.

How to use: apply with a brush, it can also be used with an airbrush.



GAME COLOR METALLIC

Game Metallic also has an **improved formulation** that enhances the application, colors are **more fluid** and apply easily over the figures.

The range has been designed according to the **BSL** (Base, Shadow and Light) figure paint system, based on chromatically compatible **groupings of three colors**, which offers the less experienced painter for an easy choice of colors to paint miniatures with the appropriate highlights and shadows for each base color.

The metalized pigment used in the formulation has an **ultra-fine particle diameter** which enhances the color properties and offers an **excellent adherence and high resistance to handling and rubbing**. Paints of the same range can be mixed together to achieve metallic effects of great intensity and realism.

How to use: apply with a brush, it can also be used with an airbrush.



GAME COLOR INK

Game Ink are **transparent colors** with a **high pigment concentration** and can be used for enhancing, shading, unifying and modifying tones, as well as for shadow effects and washes. The **satín finish** shows intense shading effects on metallic surfaces. Inks can be mixed with all acrylic colors and mediums.

How to use: apply with a brush, it can also be used with an airbrush.



GAME COLOR WASH

Game Wash is the range of colors for wash effects and techniques on figures, which can also be used on other surfaces. It is presented with a new formulation that enhances the capillary properties of the product.

A wash is a **transparent** and very liquid acrylic color, mainly used for **shading** techniques on figures and vehicles, as well as for creating **glazing and filter** effects over other colors in the range. Can be applied directly with a brush or an airbrush.

The **Sepia and Black** washes are available in a 200 ml wide-mouth bottle. This special container allows us to quickly wash or shade by **dipping** the figures into the container.

How to use: apply with a brush, it can also be used with an airbrush.



GAME COLOR SPECIAL FX

Special FX colors range has been completely reformulated in order to reproduce different **effects** on miniatures and fantasy sets.

Blood, bile, vomit and other organic textures are ideal to apply on fantasy or science fiction figures. Effects such as verdigris, rust or corrosion will allow us to incorporate textures and weathering **effects on figures, scenes and dioramas**.

How to use: apply with a brush.



GAME COLOR FLUO

Fluorescent colors are ideal for providing **special lighting effects** to your fantasy figures and vehicles. If you want to optimize the properties of these colors it is advisable to apply them over a white primer because the few fluorescent pigments available are transparent or semi-opaque in nature.

How to use: apply with an airbrush, it can also be used with a brush.



AUXILIARY PRODUCTS

This range includes a series of mediums, varnishes and thinners that are used to **modify color** characteristics, such as gloss, opacity or drying time.

Glaze Medium dilutes and delays color drying time.

Mixed with **Metallic Medium** colors take on a pearlescent and metallic effect.

Diluted with **Airbrush Thinner**, 1 part of thinner, 2 parts of color, can be used with an airbrush.

Polyurethane varnishes offer **great resistance** to handling, can be applied by brush or with the use of an airbrush and dry very fast. They are used as a final protective coat and can be mixed with the colors to modify their gloss characteristics. The assortment offers **different finishes**, from Gloss to Ultra Matt.

Safety/Toxicity: Game Color is manufactured in accordance with European regulations and conforms to ASTM D-4236.



HOBBY PAINT

The easiest & quickest way to get your Army fully painted and ready for battle.

Spray primers for metal, plastic and resin miniatures.

Sprays are a perfect combination of **base coat and highly pigmented color**, developed for use on all metal, plastic and resin models and miniatures. Our original and unique spray formula **dries fast** and offers a **perfect matt and self-levelling finish**, designed to respect and bring forth even the finest details of the models and miniatures.

The Hobby Paint assortment includes 3 basic colors, 19 fantasy shades, 5 WWII AFV and 4 WWII infantry colors. The colors are a perfect match to the equivalent shades available in our Game and Model Color ranges, so both painting techniques can be combined.

Each Hobby Paint shows the original color applied on the colored ring around the top and is equipped with 2 different nozzles; one with a low discharge flow, especially recommended for painting precise and small details and the medium discharge flow, recommended for painting medium and larger surfaces.

The range is complemented with 3 different varnishes: gloss, matt and satin, recommended for providing extra protection when handling your figures and to give them an overall uniform appearance.



Spray can equipped with 2 nozzles

Black skinny cap
Low discharge flow. Especially recommended for painting precise and small details.

White pocket cap
Medium discharge flow. Recommended for painting medium and larger surfaces.

EX722 New Fantasy Colors

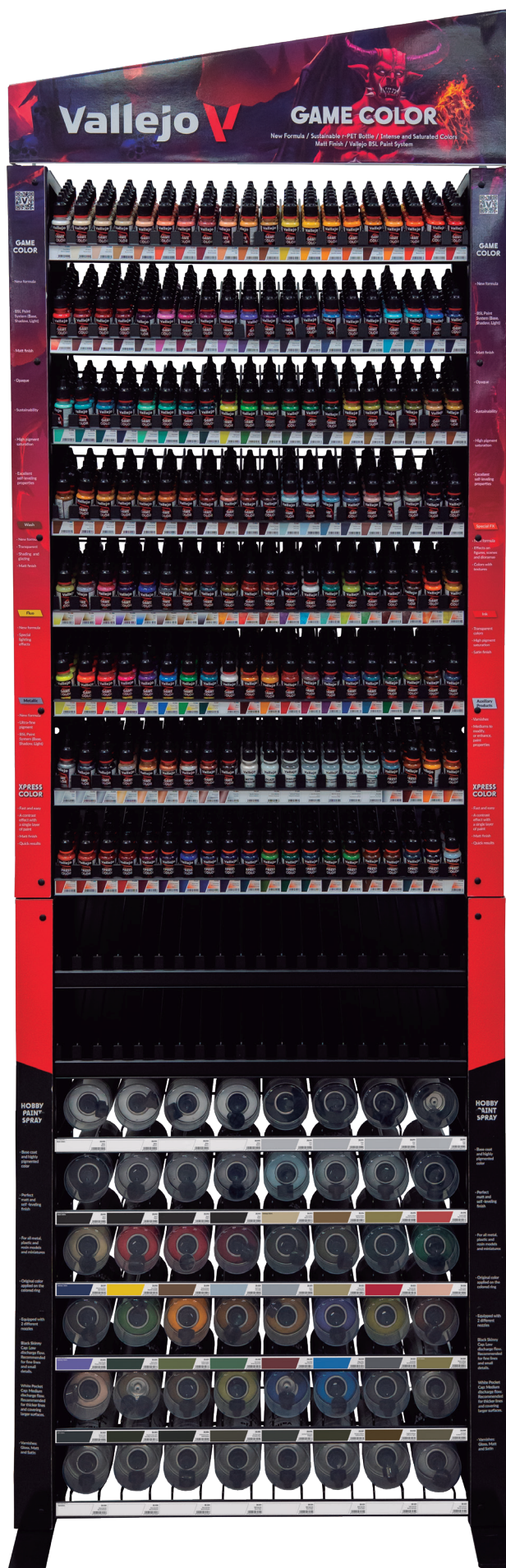
Contents Game Color, Xpress Color and Hobby Paint Spray

Black metal floor length display, divided in two sections, allows for the addition of door and wheels. Contains the Game Color and Xpress Color complete range and 48 Hobby Paint Spray units.

Width: 26.26 in / 66,7 cm

Depth: 9.05 in / 23 cm

Height: 80.70 in / 205 cm



These 2 empty shelves will display the upcoming range expansion of Xpress Color.

EX722 New Fantasy Colors

includes spray door kit and wheels

Contents Game Color, Xpress Color and Hobby Paint Spray

Black metal floor length display, divided in two sections, with the addition of door and wheels. Contains the Game Color and Xpress Color complete range and 48 Hobby Paint Spray units.

Width: 26.26 in / 66,7 cm
Depth: 9.05 in / 23 cm
Height: 80.70 in / 205 cm



These 2 empty shelves will display the upcoming range expansion of Xpress Color.

Ref. EX722/GC-PT Plastic door kit

Plastic door includes a key lock. Check availability and price for this accessory.

Ref. EX722/GC-R Wheels

The display base allows to add wheels for those customers who wish to move the rack. Check availability and price for this accessory.

EX722 New Fantasy Colors

Display Fantasy Colors ref. EX722 consists of 2 parts.

EX720



EX722INF

