



W&N 2022 New Cotman metallics

Product Toolkit #WN COTMAN METALLICS 2022

12/4/22



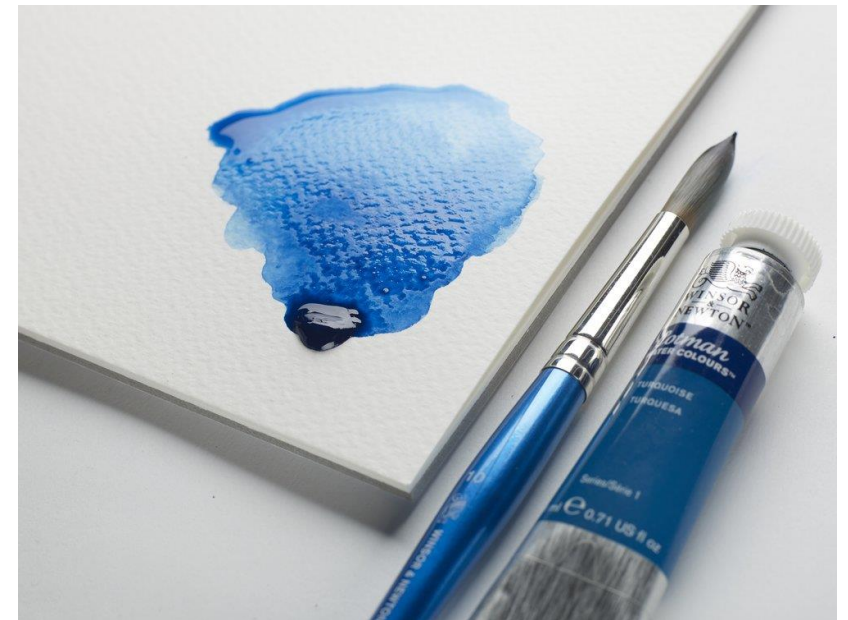
8 new colours are being added to the Cotman Watercolour range

Total range

48 colours

Unique selling points

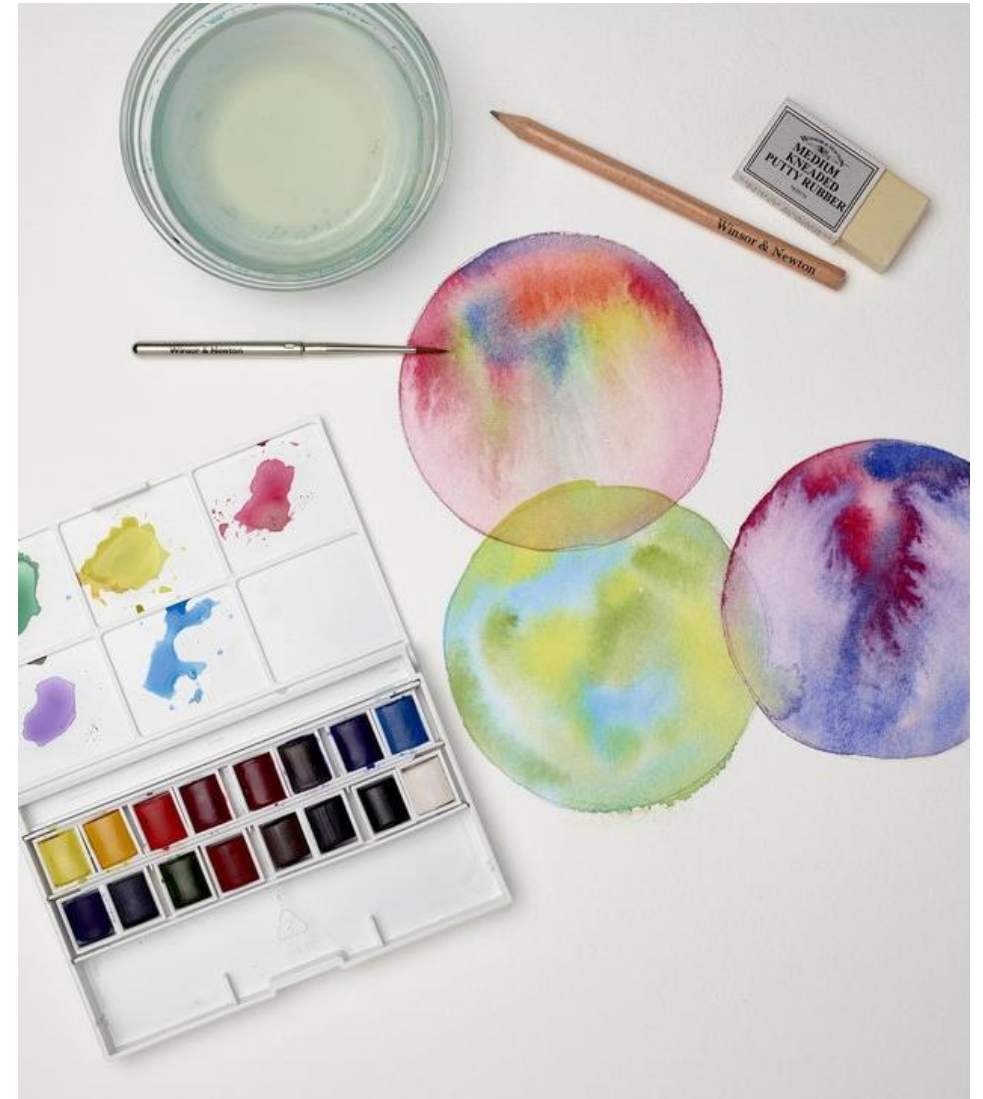
- Cotman colours are made from fine art pigments rather than dyes
- All colours are permanent so more experienced artists can trust their work will last
- Accessible watercolour range without compromising on quality
- Cotman is offered in half pans, tubes, and a wide range of sets



As a leader in watercolour, W&N can contribute to growing the watercolour category

INSIGHTS

- Watercolour is a leading paint category worldwide, including being the biggest paint category in the UK and fastest growing in North America*
- It is one of the most accessible art materials – quick drying, suitable for indoor and outdoor use, and can create a range of effects without using mediums
- Although there are lower priced, lower quality offerings in the watercolour category, Winsor & Newton has history of watercolour and paint quality as fine art pigments are used in both Cotman and Professional Watercolour ranges
- Used by a range of consumers from hobbyists new to painting, creative professionals, and fine art professionals



New Cotman Metallic Colours



Objective

Drive set curation and colour development to recruit hobbyists into the watercolour category

Product offer

- **8 metallic colours** in 8mL, 21mL, and half pans in series 2 – all other Cotman colours are currently series 1 but all W&N metallic colours in other ranges are series 2 or 3
- **2 metallic sets:**
 - All 8 metallic half pans in the Sketchers' Pocket Set with space for 4 half pans to allow for customisation
 - 6 metallic 8mL tubes (all colours excluding the iridescent black and white) in the same format as 6 tube collection
- **A sample dot card** of 8 metallic colours so consumers can try the new colours



Benefit

New metallic watercolours that add iridescence either on top of non-metallic colours or mixed with other non-metallic colours, with a set containing the range of new colours with spaces for customisation.

Positioning

Dependable, quality watercolours made to the same high standard as the rest of the Cotman Watercolour range. Delivers a high level of iridescence and brightness compared to other metallic watercolours.

Reason to believe

- Watercolours continue to experience YoY growth of +13% (R12M sell out to Jul)
- Cotman Watercolours are a trusted brand offering a great range of colours except metallic watercolours, although competitor analysis shows they are popular
- The Metallic Pocket Set would make a great Christmas present or could be used to create gift cards

Cotman Metallic Colours



Target consumer

Hobbyists

Colour selection and rationale

Winsor & Newton are known for fine art colours so the focus has been on core metallic colours offered in our other ranges such as Pewter, Silver, and Bronze. However, there is a recognition that consumers may want a wide range of mixing possibilities so this launch includes Yellow Gold, Iridescent Blue, and Red Copper which are the primary metallic colours that can be mixed together to create metallic secondaries.

Price positioning

Series 2 for loose colours with set to be comparable to more expensive than the Sketchers' Pocket Set – will have a better steer once costs are available

Target channels

Primary: Art & Craft

Secondary: Fine Art – particularly over the gifting season

Availability

Loose

- DC9/DC7: May 2022
- DC4: June 2022

Sets

- DC9: beginning June
- DC7/DC4: end June

¹Stability testing still in progress

²Colour names and set name still in progress

About the Colours

The 8 new metallic colours add iridescence either on top of non-metallic colours or mixed with other non-metallic colours

Yellow Gold, Iridescent Blue, and Red Copper are offered as the primary metallic colours

All of the new colours are rated as permanent

| Colour | Description | USPs |
|------------------|--|---|
| Iridescent Blue | A light, cool blue that creates a spectrum of secondaries when mixed with Yellow Gold or Red Copper. | <ul style="list-style-type: none">• Light, transparent blue• Creates secondaries when mixed with Yellow Gold or Red Copper• Permanent, durable colour |
| Yellow Gold | A yellow metallic offering a modern version of a historic gold watercolour, where previously real gold was actually used. Creates a spectrum of secondaries when mixed with Red Copper or Iridescent Blue. | <ul style="list-style-type: none">• Bright, metallic yellow• Creates secondaries when mixed with Red Copper or Iridescent Blue• Permanent, durable colour |
| Bronze | A warm brown metallic offering a warm depth and tone when added to other colours. | <ul style="list-style-type: none">• Brown metallic• Offers a warm depth and tone• Permanent, durable colour |
| Red Copper | A warm copper offering a deep metallic red tone. Creates a spectrum of secondaries when mixed with Yellow Gold or Iridescent Blue. | <ul style="list-style-type: none">• Deep metallic red copper• Creates secondaries when mixed with Yellow Gold or Iridescent Blue• Permanent, durable colour |
| Silver | A delicate silver with a high metallic quality to distinguish it from other more light grey alternatives. | <ul style="list-style-type: none">• Delicate silver• Highly metallic• Permanent, durable colour |
| Pewter | A dark metallic that can be mixed with other colours for more subtle tonal shifts than using Iridescent Black. | <ul style="list-style-type: none">• Deep, dark metallic• Creates subtle metallic tonal shifts when mixed with other colours• Permanent, durable colour |
| Iridescent Black | The darkest watercolour that offers a iridescent quality, perfect for being used on it's on own as well as for toning other colours to be iridescent and darker when mixed. | <ul style="list-style-type: none">• Darkest iridescent watercolour• Tones other colours to be iridescent and darker when mixed• Permanent, durable colour |
| Iridescent White | A colour which is perfect for subtle iridescence on top of other colours, and for tinting other colours to be iridescent and lighter when mixed. | <ul style="list-style-type: none">• Iridescent, transparent white• Tints other colours to be iridescent and lighter when mixed• Permanent, durable colour |

Cotman Metallic Colours – 8ml Product Codes NA

| Product Name | Series | Permanence | Opacity | Lightfastness | Pigment | Barcode | Product Code | MOQ |
|---------------------------|--------|------------|---------|----------------|------------|--------------|--------------|-----|
| Iridescent Blue 8ml Tube | 2 | A | T | Not ASTM rated | Mica, PB27 | 884955091234 | 0303472 | 3 |
| Yellow Gold 8ml Tube | 2 | A | SO | Not ASTM rated | Mica | 884955091227 | 0303088 | 3 |
| Bronze 8ml Tube | 2 | A | SO | Not ASTM rated | Mica | 884955091272 | 0303058 | 3 |
| Red Copper 8ml Tube | 2 | A | SO | Not ASTM rated | Mica | 884955091241 | 0303471 | 3 |
| Silver 8ml Tube | 2 | A | SO | Not ASTM rated | Mica, PBK9 | 884955091265 | 0303617 | 3 |
| Pewter 8ml Tube | 2 | A | SO | Not ASTM rated | Mica | 884955091258 | 0303511 | 3 |
| Iridescent Black 8ml Tube | 2 | A | SO | Not ASTM rated | Mica | 884955091289 | 0303473 | 3 |
| Iridescent White 8ml Tube | 2 | A | T | Not ASTM rated | Mica | 884955091296 | 0303330 | 3 |



Key to coding:

¹ Permanence: A = Permanent

² Opacity: T = transparent, SO = Semi-opaque

Mica: Pigment coated mica

Cotman Metallic Colours – 8ml Product Codes ROW

| Product Name | Series | Permanence | Opacity | Lightfastness | Pigment | Barcode | Product Code | MOQ |
|---------------------------|--------|------------|---------|----------------|------------|--------------|--------------|-----|
| Iridescent Blue 8ml Tube | 2 | A | T | Not ASTM rated | Mica, PB27 | 884955090459 | 8840526 | 3 |
| Yellow Gold 8ml Tube | 2 | A | SO | Not ASTM rated | Mica | 884955090442 | 8840525 | 3 |
| Bronze 8ml Tube | 2 | A | SO | Not ASTM rated | Mica | 884955090497 | 8840530 | 3 |
| Red Copper 8ml Tube | 2 | A | SO | Not ASTM rated | Mica | 884955090466 | 8840527 | 3 |
| Silver 8ml Tube | 2 | A | SO | Not ASTM rated | Mica, PBK9 | 884955090480 | 8840529 | 3 |
| Pewter 8ml Tube | 2 | A | SO | Not ASTM rated | Mica | 884955090473 | 8840528 | 3 |
| Iridescent Black 8ml Tube | 2 | A | SO | Not ASTM rated | Mica | 884955090503 | 8840531 | 3 |
| Iridescent White 8ml Tube | 2 | A | T | Not ASTM rated | Mica | 884955090510 | 8840532 | 3 |



Key to coding:

¹ Permanence: A = Permanent

² Opacity: T = transparent, SO = Semi-opaque

Mica: Pigment coated mica

Cotman Metallic Colours – 21ml Product Codes

| Product Name | Series | Permanence | Opacity | Lightfastness | Pigment | Barcode | Product Code | MOQ |
|----------------------------|--------|------------|---------|----------------|------------|--------------|--------------|-----|
| Iridescent Blue 21ml Tube | 2 | A | T | Not ASTM rated | Mica, PB27 | 884955090534 | 0308472 | 3 |
| Yellow Gold 21ml Tube | 2 | A | SO | Not ASTM rated | Mica | 884955090527 | 0308088 | 3 |
| Bronze 21ml Tube | 2 | A | SO | Not ASTM rated | Mica | 884955090572 | 0308058 | 3 |
| Red Copper 21ml Tube | 2 | A | SO | Not ASTM rated | Mica | 884955090541 | 0308471 | 3 |
| Silver 21ml Tube | 2 | A | SO | Not ASTM rated | Mica, PBK9 | 884955090565 | 0308617 | 3 |
| Pewter 21ml Tube | 2 | A | SO | Not ASTM rated | Mica | 884955090558 | 0308511 | 3 |
| Iridescent Black 21ml Tube | 2 | A | SO | Not ASTM rated | Mica | 884955090589 | 0308473 | 3 |
| Iridescent White 21ml Tube | 2 | A | T | Not ASTM rated | Mica | 884955090596 | 0308330 | 3 |



Key to coding:

¹ Permanence: A = Permanent

² Opacity: T = transparent, SO = Semi-opaque

Mica: Pigment coated mica

Cotman Metallic Colours – Half Pan Product Codes

| Product Name | Series | Permanence | Opacity | Lightfastness | Pigment | Barcode | Product Code | MOQ |
|---------------------------|--------|------------|---------|----------------|------------|--------------|--------------|-----|
| Iridescent Blue Half Pan | 2 | A | T | Not ASTM rated | Mica, PB27 | 884955090619 | 0301472 | 3 |
| Yellow Gold Half Pan | 2 | A | SO | Not ASTM rated | Mica | 884955090602 | 0301088 | 3 |
| Bronze Half Pan | 2 | A | SO | Not ASTM rated | Mica | 884955090657 | 0301058 | 3 |
| Red Copper Half Pan | 2 | A | SO | Not ASTM rated | Mica | 884955090626 | 0301471 | 3 |
| Silver Half Pan | 2 | A | SO | Not ASTM rated | Mica, PBK9 | 884955090640 | 0301617 | 3 |
| Pewter Half Pan | 2 | A | SO | Not ASTM rated | Mica | 884955090633 | 0301511 | 3 |
| Iridescent Black Half Pan | 2 | A | SO | Not ASTM rated | Mica | 884955090664 | 0301473 | 3 |
| Iridescent White Half Pan | 2 | A | T | Not ASTM rated | Mica | 884955090671 | 0301330 | 3 |

Key to coding:

¹ Permanence: A = Permanent

² Opacity: T = transparent, SO = Semi-opaque

Mica: Pigment coated mica



Cotman Metallic Colours – Metallic Sets and Dot Card Product Codes

| Product Name | Colours | Product description | USPs | Barcode | Product Code | MOQ |
|--------------------------------|---|---|--|--------------|--------------|-----|
| Metallic Pocket Set | All Metallic Colours | Discover 8 Cotman metallic Watercolours made with quality, fine art pigments in a pocket-sized set. Includes a travel brush and space for 4 more colours. | <ul style="list-style-type: none"> • 8 metallic watercolours • Offered in a pocket-sized set • Includes a travel brush and space for 4 more colours | 884955090688 | 0390702 | 1 |
| 6 Tube Metallic Collection | <ul style="list-style-type: none"> • Iridescent Blue • Yellow Gold Half Pan • Bronze • Red Copper • Silver • Pewter | Discover 6 tubes of Cotman metallic Watercolours made with quality, fine art pigments. | <ul style="list-style-type: none"> • 6 metallic watercolours • Permanent, durable colours • Suitable to layer over or mix with non-metallic colours | 884955090947 | 0390703 | 1 |
| Metallic watercolours dot card | All Metallic Colours | | | 884955090695 | 7654480 | 1 |



Individual colours (#WN COTMAN METALLICS 2022)

- Range
- Individual colours (with and without USPs)



- Light, transparent blue
- Create secondaries when mixed with Yellow Gold or Red Copper
- Permanent, durable colour



- Iridescent, transparent white
- Tints other colours to be iridescent and lighter when mixed
- Permanent, durable colour

Sets (#WN COTMAN METALLICS 2022)




Colour imagery (#WN COTMAN METALLICS 2022)

[Swatches](#) and [lifestyle](#)




Sales sheet (#WN COTMAN METALLICS 2022)



Cotman Watercolour Metallic Colours


8 NEW
colours




8 NEW Cotman Metallic Colours

New metallic watercolours that add iridescence to your colour, can be used either mixed with watercolours or added as an iridescent layer over colour. A set containing the range of new colours with spaces for your own additions.

A Series 2 colour range.
Available from: June 2022.





Deliver a high level of iridescence and brightness compared to other metallic watercolours.

winsornewton.com



Cotman Watercolour Metallic Colours

8 NEW
colours



Iridescent Blue

| | | | |
|------------------|---------|-----|---|
| 8ml Tube | 8840526 | MOQ | 3 |
| 21ml Tube | 0308472 | | 3 |
| Half Pan | 0301472 | | 3 |



Yellow Gold

| | | | |
|------------------|---------|-----|---|
| 8ml Tube | 8840525 | MOQ | 3 |
| 21ml Tube | 0308088 | | 3 |
| Half Pan | 0301088 | | 3 |




Bronze

| | | | |
|------------------|---------|-----|---|
| 8ml Tube | 8840530 | MOQ | 3 |
| 21ml Tube | 0308058 | | 3 |
| Half Pan | 0301058 | | 3 |



Red Copper


| | | | |
|------------------|---------|-----|---|
| 8ml Tube | 8840527 | MOQ | 3 |
| 21ml Tube | 0308471 | | 3 |
| Half Pan | 0301471 | | 3 |



Cotman Watercolour Metallic Colours

8 NEW
colours


Winsor & Newton
Cotman Watercolour
8 half pan
metallic pocket set



| | | |
|-----------------------------------|---------------------------|-------------------|
| metallic pocket set | set tascabile i metallici | 9 PC/PZ |
| set de poche couleurs métalliques | Metallik-Taschenset | |
| set de bolsillo colores metálicos | | |

| | |
|--------------|-----|
| Product Code | MOQ |
| 0390702 | 1 |

Winsor & Newton
Cotman Watercolour
6 x 8ml tube
metallic collection set



| | | |
|----------------------------|-------------------------------------|-------------------|
| 6 tube metallic collection | set de 6 tubos colores metálicos | 6 PC/PZ |
| assortiment de 6 tubes | assortimento da 6 tubetti metallici | |
| collection métalliques | 6 Tuben Metallik-Sortiment | |

| | |
|--------------|-----|
| Product Code | MOQ |
| 0390703 | 1 |

Retail assets (#WN COTMAN METALLICS 2022)

POS

- Shelf strips (ROW only)
- Wobblers – loose colours and sets
- Flat packed CTU

Available: End April (DC7, DC9) and end May (DC4)

Dot cards

Available: End April (DC7, DC9) and begin June (DC4)

WINSOR & NEWTON
Cotman WATERCOLOUR™

By Appointment to
H.M. The Prince of Wales
Manufacturers of Artists' Materials
Winsor & Newton
London

Metallic watercolours dot card
Carte de pastilles de peinture
aquarelle couleurs métalliques
Carta de colores metálicos de
acuarela

| | | | |
|--|---|--|--|
| 472 A S2 □ Iridescent Blue Bleu Iridescent Azul Iridescente | 058 A S2 □ Yellow Gold Or Jaune Oro Amarillo | 058 A S2 □ Bronze Bronce | 471 A S2 □ Red Copper Cuivre Rouge Cobre Rojo |
| 817 A S2 □ Silver Argent Plata | 811 A S2 □ Pewter Étain Estanho | 473 A S2 □ Iridescent Black Noir Iridescent Negro Iridescente | 330 A S2 □ Iridescent White Blanc Iridescent Blanco Iridescente |

| Iridescent blue | Yellow gold | Bronze | Red copper | Silver | Pewter | Iridescent black | Iridescent white |
|-----------------|-------------|----------|------------|----------|----------|------------------|------------------|
| Series 2 | Series 2 | Series 2 | Series 2 | Series 2 | Series 2 | Series 2 | Series 2 |
| metallic | metallic | metallic | metallic | metallic | metallic | metallic | metallic |

WINSOR & NEWTON
Cotman Watercolour
Metallic Colours

NEW

8 metallic watercolours
to layer over or mix with
non-metallic watercolours

Includes Yellow Gold, Red
Copper, and Iridescent Blue
for mixes of metallic and
iridescent colours

winsornewton.com

7654548 884955091180

WINSOR & NEWTON
Cotman Watercolour
Metallic Pocket Set

NEW

8 metallic watercolours
in a pocket-sized set

Includes a travel brush and
space for 4 more colours

winsornewton.com

7654548 884955091180

