

Test Report

No.: T51910260014EL

Date: SEP 02, 2019

Page 1 of 7

SHANTOU CITY CHENGHAI DISTRICT
ZE CONG PLASTIC TOYS FACTORY
SOUTH SIDE OF DENG FENG ROAD,
GUANG YI STREET, CHENGHAI DISTRICT,
SHANTOU CITY, GUANGDONG PROVINCE, CHINA

The following samples were submitted and identified by/on behalf of the client as:

Name of Product/Item : SOFT BULLET GUN SERIES

Item No. : ZC7116, ZC7117, ZC7118, ZC7119, ZC7120, ZC7121, ZC7109, ZC7101, ZC7100, ZC7096, ZC7091, ZC7090, ZC7089, ZC7088, ZC7087, ZC7083, ZC7080, ZC7079, ZC7078, ZC7077, ZC7076, ZC7075, ZC7073, ZC7104, ZC04, ZC05, ZC06, ZC08, ZC09, ZC10, ZC11, ZC7122, ZC7123, ZC7124, ZC7125, ZC7126, ZC7127, ZC7128, ZC7129, ZC7130, ZC7131, ZC7132, ZC7133, ZC7134, ZC7135, ZC7136, ZC7137, ZC7138, 7057, 7056, 7055, 7054, 7053, 7052, 7051, 7050, 7033, 7032, 7029, 7026, 7025, 7024, 7023, 7022, 7021, 7020, 7019, 7011, 7010, 7009, 7007, 7006, 7005, 7004, 7003, 7002, 7001, 01*20, 02*20, 03*40

Test Item No. : 7004, ZC7080, 7054, 7051

Labeled Age Grading : 6+

Request Age Grading : Ages 8+

Test Age Grading : Over 6 years

Packaging : Artwork

Power Source for Test : 3 x 1.5V "LR6" size batteries (Duracell) for yellow gun
3 x 1.5V "LR6" size batteries (Duracell) for small gray gun
2 x 1.5V "LR44" size button cells for sighting device
5 x 1.5V "LR6" size batteries (Duracell) for blue gun
6 x 1.5V "AA" (non-replaceable) for big gray gun

Date of receipt : JUL 02, 2019 Number of sample: 21

Last Submission Sample Date : AUG 27, 2019 Number of sample: 1

Testing Period : JUL 02, 2019 TO SEP 02, 2019



SGS-CSTC (Shenzhen) Technical Services Co., Ltd.
Shenzhen Branch Testing Center Hardlines

Unless otherwise agreed in writing, this document is issued by the Company subject to its General Conditions of Service printed overleaf, available on request or accessible at <http://www.sgs.com/en/Terms-and-Conditions.aspx> and, for electronic format documents, subject to Terms and Conditions for Electronic Documents at <http://www.sgs.com/en/Terms-and-Conditions/Terms-e-Document.aspx>. Attention is drawn to the limitation of liability, indemnification and jurisdiction issues defined therein. Any holder of this document is advised that information contained hereon reflects the Company's findings at the time of its intervention only and within the limits of Client's instructions, if any. The Company's sole responsibility is to its Client and this document does not exonerate parties to a transaction from exercising all their rights and obligations under the transaction documents. This document cannot be reproduced except in full, without prior written approval of the Company. Any unauthorized alteration, forgery or falsification of the content or appearance of this document is unlawful and offenders may be prosecuted to the fullest extent of the law. Unless otherwise stated the results shown in this test report refer only to the sample(s) tested and such sample(s) are retained for 30 days only.

Attention: To check the authenticity of testing / inspection report & certificate, please contact us at telephone: (86-755) 8307 1443, or email: CN.Doccheck@sgs.com

SGS Bldg, No. 4, Jianghao Industrial Park, No. 430, Jihua Road, Banlan, Longgang District, Shenzhen, China 518129 t (86-755) 25328888 f (86-755) 83106190 www.sgs.com.cn
中国·深圳·龙岗区坂田吉华路430号江灏工业园4栋SGS大楼 邮编: 518129 t (86-755) 25328888 f (86-755) 83106190 e sgs.china@sgs.com

Test Requested	Conclusion
<p>1. Test for compliance with the electric toys safety requirement with reference to IEC 62115: 2017.</p> <p>(Except clause 15.5 certificate for Batteries as per client request.)</p>	<p>PASS</p>

***** FOR FURTHER DETAILS, PLEASE REFER TO THE FOLLOWING PAGE(S) *****

Signed for and on behalf of
 SGS-CSTC Standards Technical
 Services Co., Ltd. Shenzhen Branch Testing Center




Xiao Yongbo, Spring
 Supervisor
 CNAS Approved Signatory



Unless otherwise agreed in writing, this document is issued by the Company subject to its General Conditions of Service printed overleaf, available on request or accessible at <http://www.sgs.com/en/Terms-and-Conditions.aspx> and, for electronic format documents, subject to Terms and Conditions for Electronic Documents at <http://www.sgs.com/en/Terms-and-Conditions/Terms-e-Documents.aspx>. Attention is drawn to the limitation of liability, indemnification and jurisdiction issues defined therein. Any holder of this document is advised that information contained hereon reflects the Company's findings at the time of its intervention only and within the limits of Client's instructions, if any. The Company's sole responsibility is to its Client and this document does not exonerate parties to a transaction from exercising all their rights and obligations under the transaction documents. This document cannot be reproduced except in full, without prior written approval of the Company. Any unauthorized alteration, forgery or falsification of the content or appearance of this document is unlawful and offenders may be prosecuted to the fullest extent of the law. Unless otherwise stated the results shown in this test report refer only to the sample(s) tested and such sample(s) are retained for 30 days only.

Attention: To check the authenticity of testing / inspection report & certificate, please contact us at telephone: (86-755) 8307 1443, or email: CN.Doccheck@sgs.com

IEC 62115: 2017 SPECIFICATION REQUIREMENTS & TEST RESULTS

<u>Clause</u>	<u>Assessment</u>
1. Scope	--
2. Normative references	--
3. Terms and Definitions	--
4. General requirement	--
5. General conditions for the tests	--
6. Criteria for reduced testing	--
7. Marking and instructions	Pass
(Remark: According to the standard, instruction and other texts required by the standard should be written in the official language(s) of the country in which the product is to be sold.)	
8. Power input	N/A
9. Heating and abnormal operation	Pass
10. Electric strength	Pass
11. Electric toys used in water, electric toys used with liquid and electric toys cleaned with liquid	N/A
12. Mechanical strength	Pass
13. Construction	Pass
14. Protection of cords and wires	Pass
15. Components	Pass

(Except clause 15.5 as per client request.)

16. Screws and connections	Pass
17. Creepage distances and clearances	Pass
18. Resistance to heat and fire	Pass
19. Emission from electric toys incorporating lasers and or light emitting diodes or UV emitting lamps	Pass
Toxicological hazards shall comply with ISO 8124 series of standards	--
(Remark: It is the manufacturer's responsibility to ensure the toy does not emit harmful radiation or present a toxic or similar hazard due to their operation in normal use.)	
Modulated accessible emission	Pass
Toys with an integrated field source shall comply with Annex I	N/A
(Remark: The submitted sample did not incorporate part which consuming a current more than 3A.)	

Remark: 1 flash mode(s) was tested for modulated accessible emission.

N/A = Not Applicable



SGS-CSTC Shenzhen Branch Testing Center Hardlines

Unless otherwise agreed in writing, this document is issued by the Company subject to its General Conditions of Service printed overleaf, available on request or accessible at <http://www.sgs.com/en/Terms-and-Conditions.aspx> and, for electronic format documents, subject to Terms and Conditions for Electronic Documents at <http://www.sgs.com/en/Terms-and-Conditions/Terms-e-Documents.aspx>. Attention is drawn to the limitation of liability, indemnification and jurisdiction issues defined therein. Any holder of this document is advised that information contained hereon reflects the Company's findings at the time of its intervention only and within the limits of Client's instructions, if any. The Company's sole responsibility is to its Client and this document does not exonerate parties to a transaction from exercising all their rights and obligations under the transaction documents. This document cannot be reproduced except in full, without prior written approval of the Company. Any unauthorized alteration, forgery or falsification of the content or appearance of this document is unlawful and offenders may be prosecuted to the fullest extent of the law. Unless otherwise stated the results shown in this test report refer only to the sample(s) tested and such sample(s) are retained for 30 days only.

Attention: To check the authenticity of testing / inspection report & certificate, please contact us at telephone: (86-755) 8307 1443, or email: CN.Doccheck@sgs.com

SGS Bldg, No. 4, Jianghao Industrial Park, No. 430, Jihua Road, Banlan, Longgang District, Shenzhen, China 518129 t (86-755) 25328888 f (86-755) 83106190 www.sgs.com.cn
 中国·深圳·龙岗区坂田吉华路430号江灏工业园4栋SGS大楼 邮编: 518129 t (86-755) 25328888 f (86-755) 83106190 e sgs.china@sgs.com

Detail of Radiation, and similar hazards

Electric toys incorporating lasers and or LED or UV emitting lamps comply with requirement.

Part under test	Peak emission wavelength	Measure distance	Measured emission	Emission limit
Red LED of sighting device	635nm	200mm	0.0051 w/sr	0.76w/sr



Unless otherwise agreed in writing, this document is issued by the Company subject to its General Conditions of Service printed overleaf, available on request or accessible at <http://www.sgs.com/en/Terms-and-Conditions.aspx> and, for electronic format documents, subject to Terms and Conditions for Electronic Documents at <http://www.sgs.com/en/Terms-and-Conditions/Terms-e-Document.aspx>. Attention is drawn to the limitation of liability, indemnification and jurisdiction issues defined therein. Any holder of this document is advised that information contained hereon reflects the Company's findings at the time of its intervention only and within the limits of Client's instructions, if any. The Company's sole responsibility is to its Client and this document does not exonerate parties to a transaction from exercising all their rights and obligations under the transaction documents. This document cannot be reproduced except in full, without prior written approval of the Company. Any unauthorized alteration, forgery or falsification of the content or appearance of this document is unlawful and offenders may be prosecuted to the fullest extent of the law. Unless otherwise stated the results shown in this test report refer only to the sample(s) tested and such sample(s) are retained for 30 days only.

Attention: To check the authenticity of testing / inspection report & certificate, please contact us at telephone: (86-755) 8307 1443, or email: CN.Doccheck@sgs.com

Sample Picture (As received)

Pic.1



Pic.2



Pic.3



Pic.4



Pic.5



Pic.6



SGS-CSTC (Shenzhen) Technical Services Co., Ltd.
Shenzhen Branch Testing Center Hardlines

Unless otherwise agreed in writing, this document is issued by the Company subject to its General Conditions of Service printed overleaf, available on request or accessible at <http://www.sgs.com/en/Terms-and-Conditions.aspx> and, for electronic format documents, subject to Terms and Conditions for Electronic Documents at <http://www.sgs.com/en/Terms-and-Conditions/Terms-e-Documents.aspx>. Attention is drawn to the limitation of liability, indemnification and jurisdiction issues defined therein. Any holder of this document is advised that information contained hereon reflects the Company's findings at the time of its intervention only and within the limits of Client's instructions, if any. The Company's sole responsibility is to its Client and this document does not exonerate parties to a transaction from exercising all their rights and obligations under the transaction documents. This document cannot be reproduced except in full, without prior written approval of the Company. Any unauthorized alteration, forgery or falsification of the content or appearance of this document is unlawful and offenders may be prosecuted to the fullest extent of the law. Unless otherwise stated the results shown in this test report refer only to the sample(s) tested and such sample(s) are retained for 30 days only.

Attention: To check the authenticity of testing / inspection report & certificate, please contact us at telephone: (86-755) 8307 1443, or email: CN.Doccheck@sgs.com

SGS Bldg, No. 4, Jianghao Industrial Park, No. 430, Jihua Road, Banlan, Longgang District, Shenzhen, China 518129 t (86-755) 25328888 f (86-755) 83106190 www.sgs.com.cn
中国·深圳·龙岗区坂田吉华路430号江潮工业园4栋SGS大楼 邮编: 518129 t (86-755) 25328888 f (86-755) 83106190 e sgs.china@sgs.com

Sample Picture (As received)

Pic.7



Pic.8



Pic.9



Pic.10



SGS-CSTC 检测技术有限公司深圳分公司
Shenzhen Branch Testing Center Hardlines

Unless otherwise agreed in writing, this document is issued by the Company subject to its General Conditions of Service printed overleaf, available on request or accessible at <http://www.sgs.com/en/Terms-and-Conditions.aspx> and, for electronic format documents, subject to Terms and Conditions for Electronic Documents at <http://www.sgs.com/en/Terms-and-Conditions/Terms-e-Documents.aspx>. Attention is drawn to the limitation of liability, indemnification and jurisdiction issues defined therein. Any holder of this document is advised that information contained hereon reflects the Company's findings at the time of its intervention only and within the limits of Client's instructions, if any. The Company's sole responsibility is to its Client and this document does not exonerate parties to a transaction from exercising all their rights and obligations under the transaction documents. This document cannot be reproduced except in full, without prior written approval of the Company. Any unauthorized alteration, forgery or falsification of the content or appearance of this document is unlawful and offenders may be prosecuted to the fullest extent of the law. Unless otherwise stated the results shown in this test report refer only to the sample(s) tested and such sample(s) are retained for 30 days only.

Attention: To check the authenticity of testing / inspection report & certificate, please contact us at telephone: (86-755) 8307 1443, or email: CN.Doccheck@sgs.com

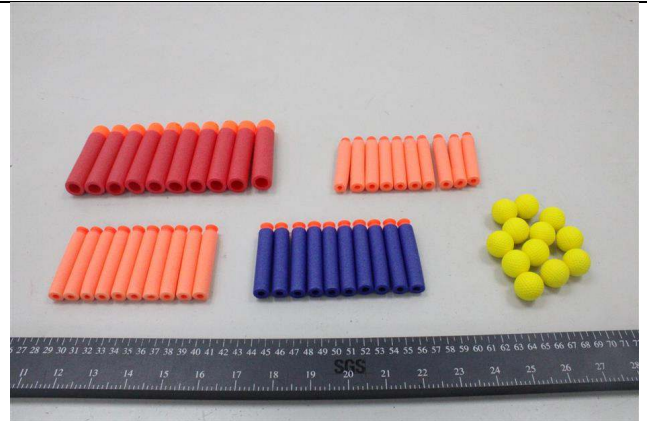
SGS Bldg, No. 4, Jianghao Industrial Park, No. 430, Jihua Road, Banlan, Longgang District, Shenzhen, China 518129 t (86-755) 25328888 f (86-755) 83106190 www.sgs.com.cn
中国·深圳·龙岗区坂田吉华路430号江灏工业园4栋SGS大楼 邮编: 518129 t (86-755) 25328888 f (86-755) 83106190 e sgs.china@sgs.com

Sample Picture (As received)

Pic.11



Pic.12



SGS authenticate the photo on original report only

*** End of Report ***

